



6/249 Haldon Street Lakemba, NSW

2 1 1

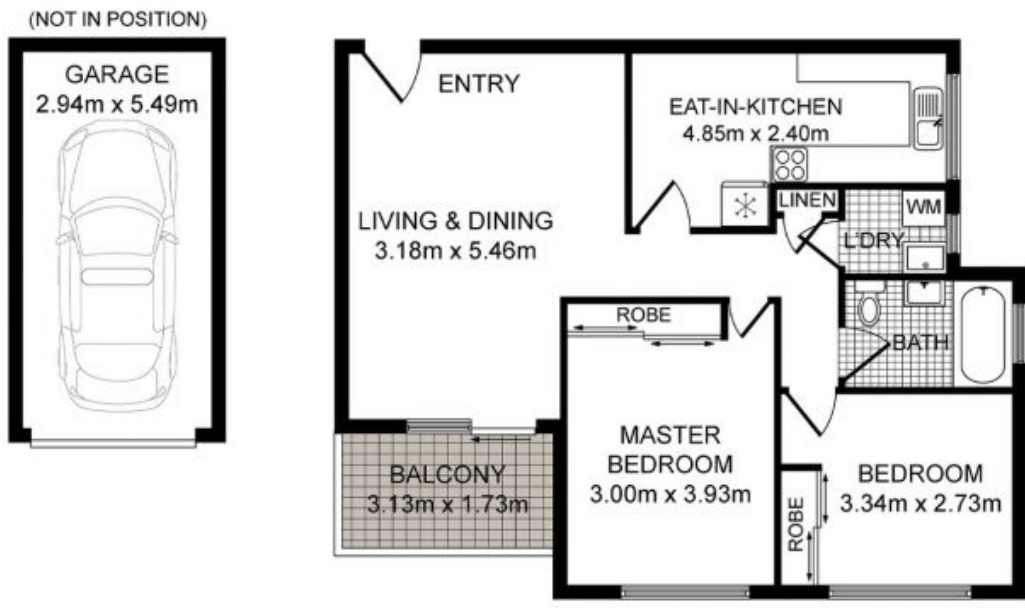
OVER-SIZED TWO BEDROOM UNIT IN THE HEART OF LAKEMBA

This modern two bedroom unit is in the heart of Lakemba located in a quiet wide street. This property hosts many conveniences and is located in well kept block. Close to surrounding Shops, schools, parks and public transport.

Other quality features :

- Carpeted throughout.
- Modern eat in kitchen.
- Large living area with balcony.
- Two large bedrooms .
- Modern bathroom with separate shower.
- Internal laundry.
- Lock Up Garage.

Inspect: Saturday, 9th November 2024 10:00 - 10:15



Whilst every attempt has been made to ensure the accuracy of the floor plan contained here measurements of doors, windows, rooms and any other items are approximate and no responsibility is taken for any error, omission or mis-statement. This plan is for illustration purpose only and should be used as such by any prospective purchaser. The service, systems and appliances shown have not been tested and no guarantee as to their operability or efficiency can be given.