



28 Smith Street Tempe, NSW



Brand New 3 Bedroom Duplex + Study + Unrestricted Street Parking

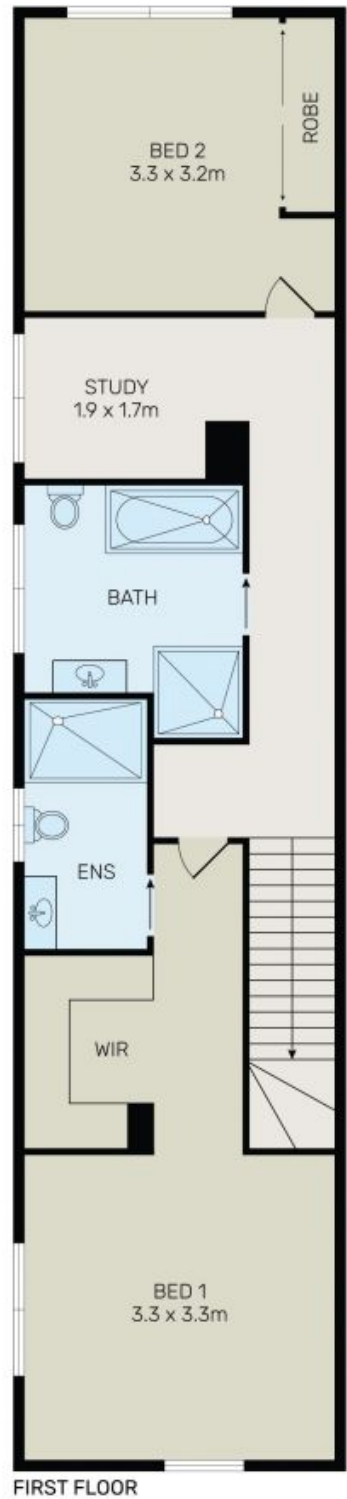
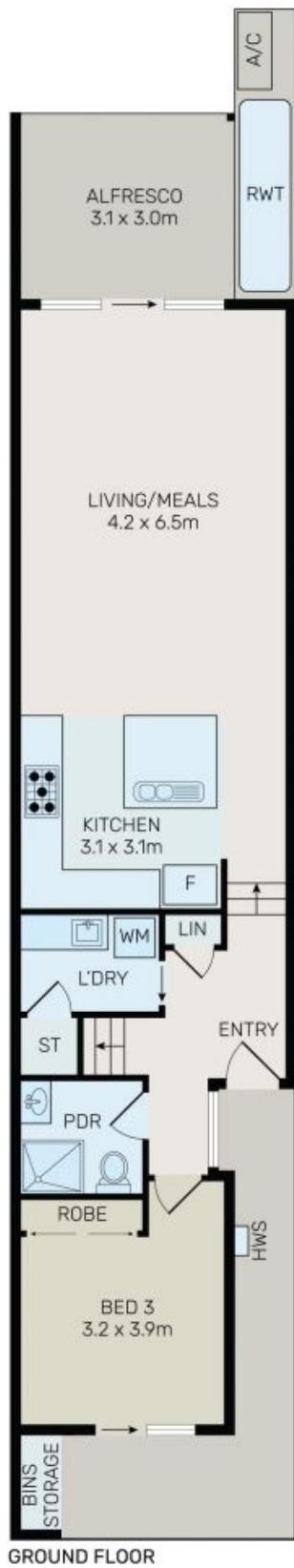
This brand new property is a striking modern take on the traditional terrace and has been meticulously appointed throughout. North East facing it has appeal in abundance and enjoys a walk to everywhere lifestyle to match.

Features include:

- Three generous bedrooms, each with ample storage, one with walk in.
- Master bedroom with ensuite bathroom, bathtub in main bathroom.
- Flexible floor plan allowing for separate dining and living.
- Home office/study space are great additions for those working from home.
- Unrestricted street parking available.
- Pets considered upon application.

Inspect:

Saturday, 9th November 2024 12:00 - 12:15



All information contained herein is gathered from all sources we believe to be reliable. However we cannot guarantee its accuracy and interested parties should rely on their own enquiries.



28 Smith Street, Tempe